



Veeam Cloud Connect manual

For Kloud Keeper service

English Version 1.1

Last Update: 18-Jan-2021



Content

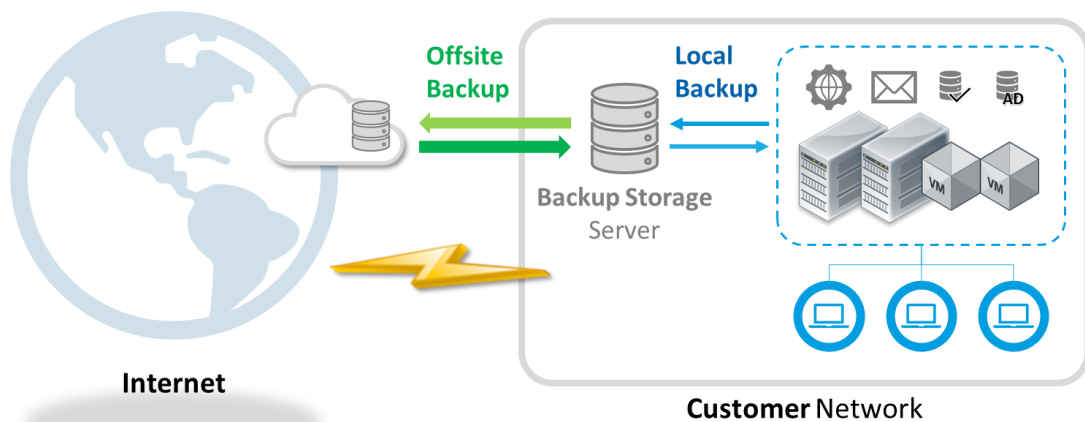
| | |
|--|----------|
| 1. Installation Overview..... | 3 |
| 2. Step to add Service Provider (Veeam Cloud Connect) | 5 |

1. INSTALLATION OVERVIEW

Kloud Keeper is designed to back up the information from your server to KSC's cloud service. Our service provide with Veeam software for backup & restore purpose. There are three types of backup,

1. Backup to internal drive and external drive accordingly

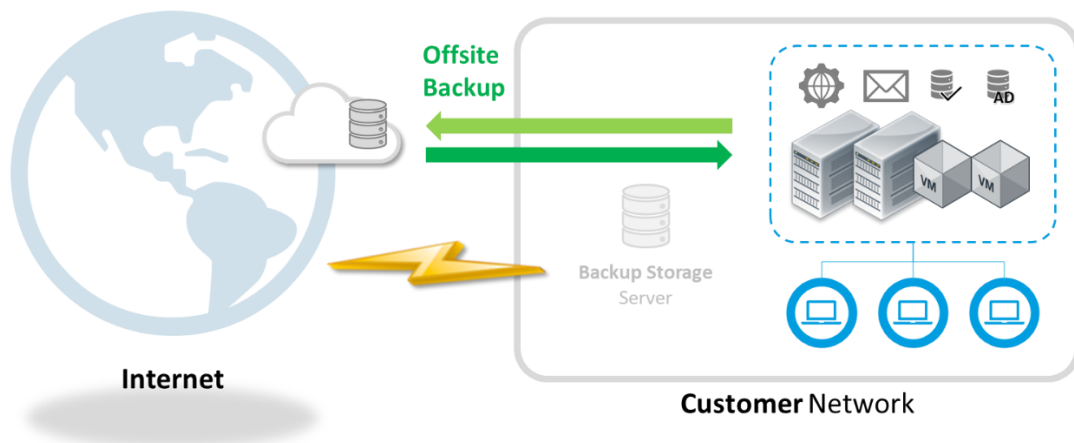
You must have internal backup server which is beneficial when you want to recover internal information immediately. In addition, there is also offsite backup to KSC's cloud service which guarantees the safety of data when internal server does not work.



For offsite backup, Veeam will provide via "Veeam Cloud Connect" service. This service provides by per Virtual Machine, per physical server or per workstation depend on type of backup service.

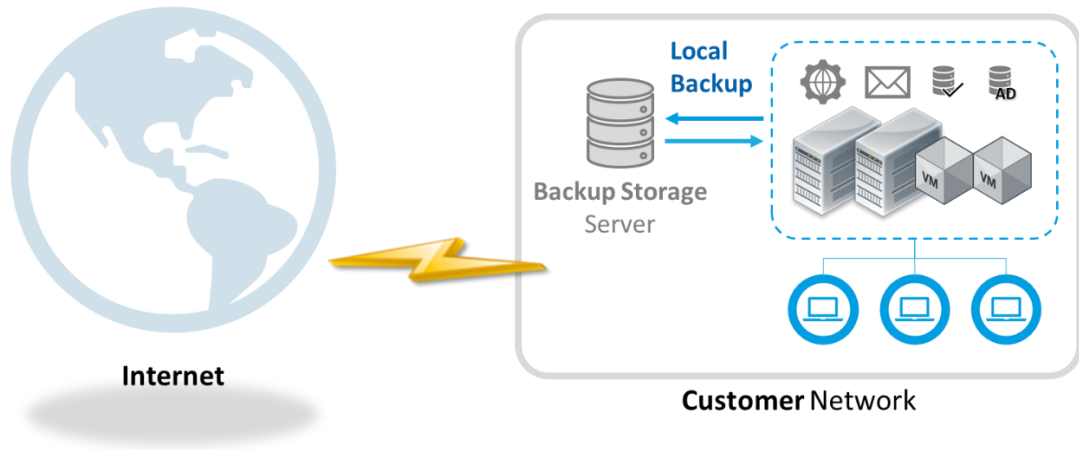
2. Backup to external drive directly

The information will be backed up to KSC's cloud service which may take times depending on the amount of the information.



3. Backup to internal drive

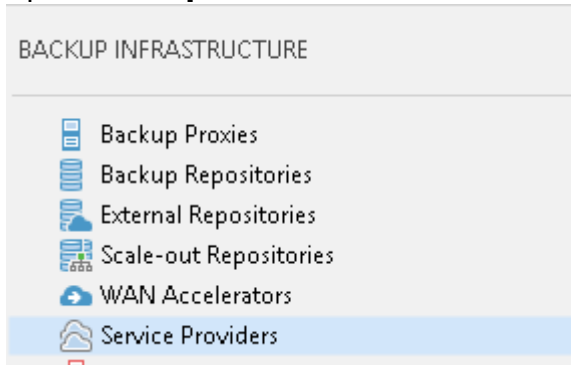
The local backup can offer rapid recovering time.



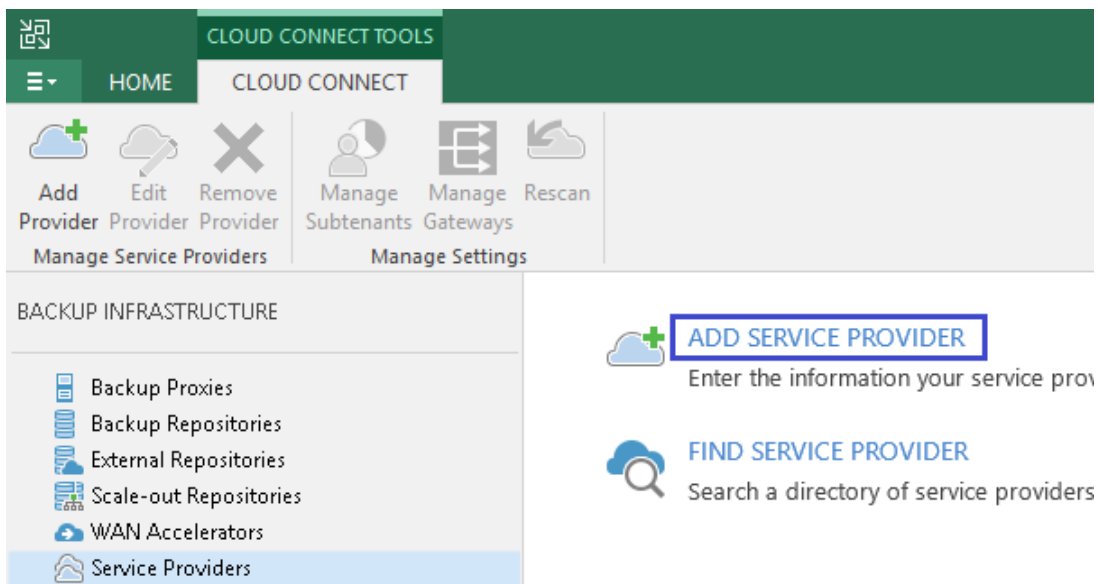
2. STEP TO ADD SERVICE PROVIDER (VEEAM CLOUD CONNECT)

Step to add "Service Provider" into Veeam software. This guideline exclude Veeam installation step.

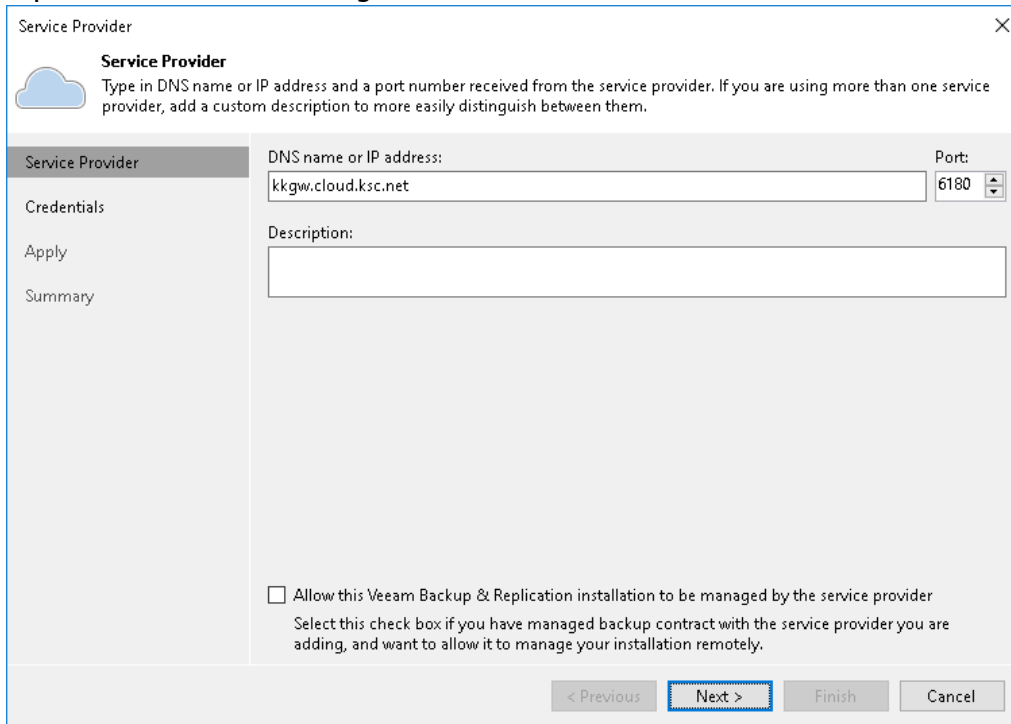
1. Open "**Backup Infrastructure**" Tab



2. Select "**Service Providers**" and select "**ADD SERVICE PROVIDER**"

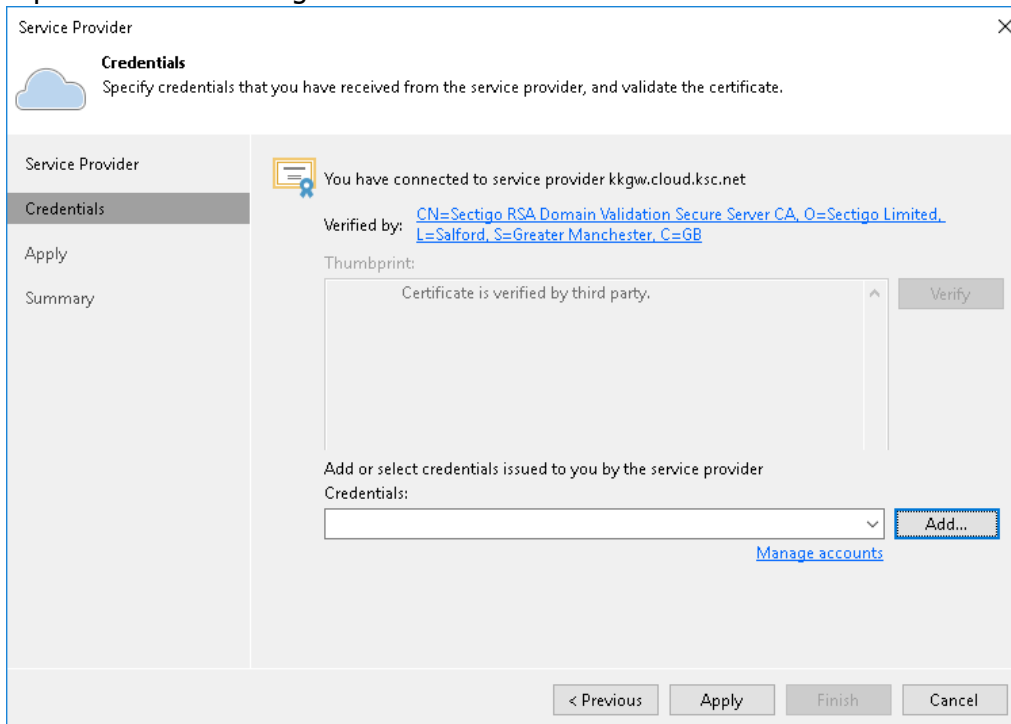


3. Input Service Provider as figure below



- DNS Name or IP address : **kkgw.cloud.ksc.net**
- Port : **6180** (default)

4. Input Credentials as figure below



- Access Tenant : **VCC-xxx** (aka Username)
- Password : **xxxx** (Password will send via SMS or other channel)

5. After complete setup, we will offsite backup via Veeam Cloud Connect under "Service Provider" tab. And we can backup via "**Backup Repositories**" in backup type "**Cloud Repository**"

| NAME | TYPE ↑ | HOST | PATH | CAPA... | FREE | USED SPA... |
|--|--------|--------------------|--------------|---------|-------|-------------|
|  [REDACTED] | Cloud | kkgw.cloud.ksc.net | \\[REDACTED] | 20 TB | 20 TB | 0 B |



Note

Veeam will display backup capacity as figure above. In this sample, show backup capacity 20TB.