

---

# **KSC MRTG Application Manual**

**English Version 1.0**

---

## Table of Contents

1	Basic Information .....	3
1.1	What is KSC-SNMS?.....	3
1.2	Types of KSC-SNMS Service .....	4
1.3	KSC-SNMS Usage .....	4
2	To Download and Install KSC MRTG Application .....	5
3	To Access to the Application.....	6
4	Menus .....	7
4.1	News .....	7
4.2	Customer .....	8
4.3	Link .....	11
4.4	Setting .....	11

# 1 BASIC INFORMATION

KSC MRTG Application is an application that operates on smart devices and is part of KSC Smart Network Monitoring Services (KSC-SNMS.)

## 1.1 What is KSC-SNMS?

KSC Smart Network Monitoring Service is a network management service that includes;

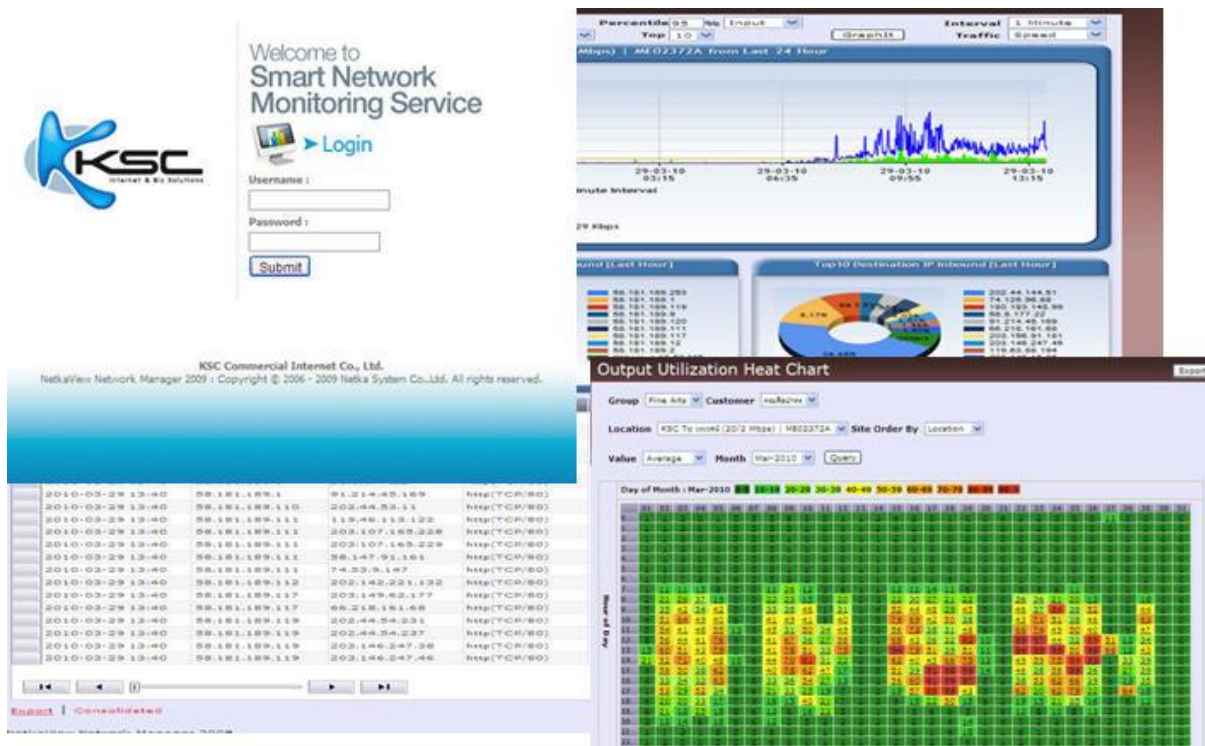
- **Fault Management**
- **Performance Management**
- **Configuration Management**

The current version of KSC-SNMS only supports the network devices configuration management of Cisco, Juniper, H3C, Extreme and Enterasys.

For Fault Management and Performance Management, the KSC-SNMS uses SNMP and ICMP standard protocol to monitor the status and collect statistic data. Configuration Management uses Telnet or SSH protocol to connect to a device.

KSC-SNMS system works with any networking devices that support IP and SNMP standard protocol and RFC1213-MIB or RFC2233-MIB (IF-MIB). If the device supports ENTITY-MIB, you can also manage the device information (such as model of the hardware, card detail, the installed module and versions of software of firmware that you are using.)

To maximise the benefits of KSC-SNMS system, please check whether your device supports RFC MIB standard before using.



Picture: KSC-SNMS Service on Website

---

## 1.2 Types of KSC-SNMS

Can be categories into 4 types;

- **Standard**  
Users can view graphs showing bandwidth utilization of links connected to KSC.
- **Standard + International**  
Users can view graphs showing bandwidth utilization of links connected to KSC and the international bandwidth utilization.
- **Network Analysis**  
Users can view graphs showing bandwidth utilization of the link connected to KSC and the international bandwidth utilization. It provides the information of the applications and IP utilization (such as HTTP, SMTP or POP3.) These applications must be connected to KSC links.
- **Network Monitoring Service**  
KSC will directly monitor the customer's devices, allowing us to monitor the devices status such as CPU Load, Memory Used and other interfaces of the device. Users can view graphs showing bandwidth utilization of the link connected to KSC, the international bandwidth utilization and information about the applications and IP utilization such as HTTP, SMTP or POP3.

## 1.3 KSC-SNMS Usage

Today you can use KSC-SNMS on these channels;

- Website: <http://netview.ksc.net.th/customer/login.aspx>.
- Applications on your smartphone or tablet (now only on iOS devices). The application can be downloaded from App Store or at <https://itunes.apple.com/cn/app/internet-ksc/id807361268?l=en&mt=8>.

## KSC MRTG Application

KSC MRTG Application delivers the complete view of links utilization on your smartphone or tablets. The information provided includes;

- Circuit information
- Circuit status
- Circuit availability
- Circuit utilization
- Circuit domestic utilization
- Circuit international utilization

## 2 TO DOWNLOAD AND INSTALL KSC MRTG APPLICATION

KSC MRTG Application is iOS-only for now and will be available to Android devices soon. To download the application to your smart devices (iPhone or iPad), please go to App Store and search for "Internet KSC", as shown in the picture below. Then, click download to automatically install the application to your devices.



When the application is completed, you will see Internet KSC application icon on the screen.



### 3 TO ACCESS THE APPLICATION

When you enter the application “**Internet KSC**”, you will be prompted to login to the service. In **Host**, type “netview.ksc.net.th” and in Path, type “customer.” Then enter your username and password in the field to access MRTG service. Click “**Log In**”



The screenshot shows the NetkaView login page. At the top left is the KSC logo, and at the top right is a 'Log In' button. The main content area contains a form with four rows:

Host	netview.ksc.net.th
Path	customer
Username	Username
Password	Password

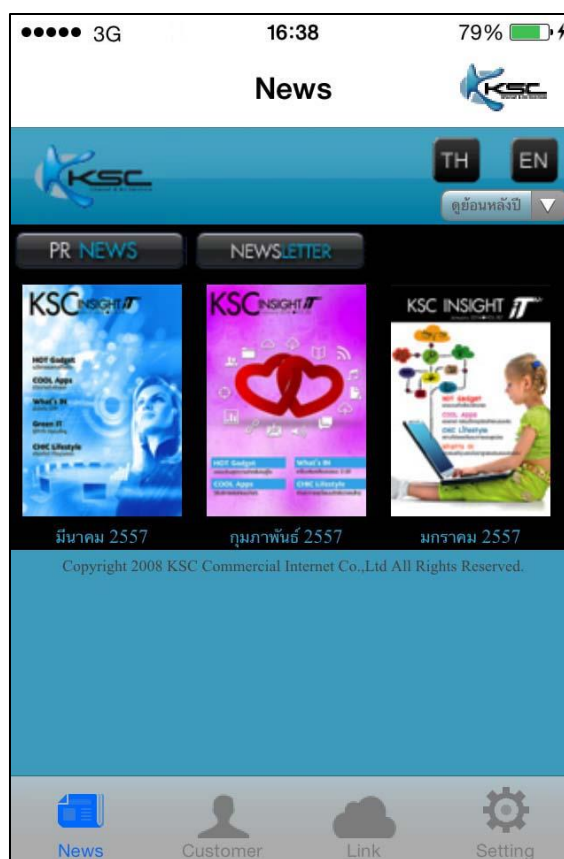
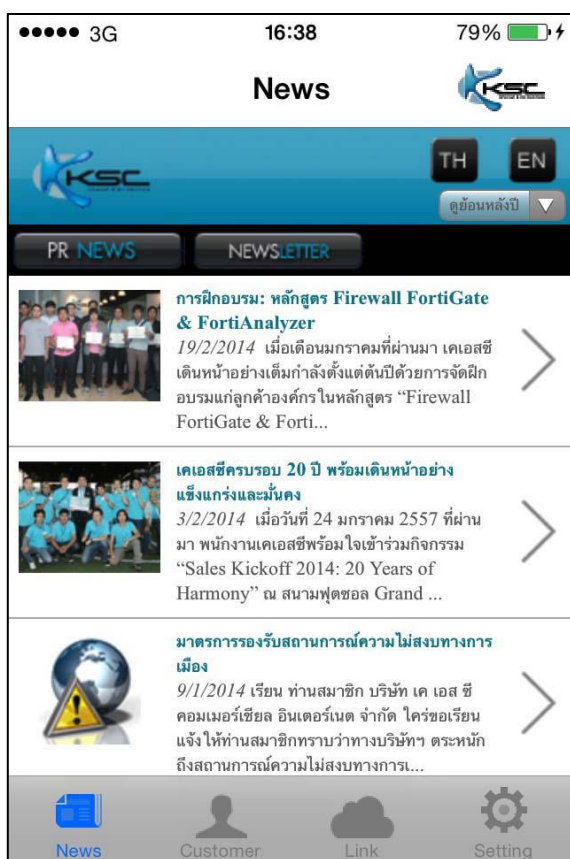
## 4 MENUS

The application menus include;

- **News:** show news and activities from KSC.
- **Customer:** show link utilization data. In case you are using more than one link, these links will be grouped to make it easier to monitors, for example, a group of links from branch A and a group of links from branch B.
- **Links:** show all links information similar to Customer, but links are not grouped.
- **Setting:** is a log out page.

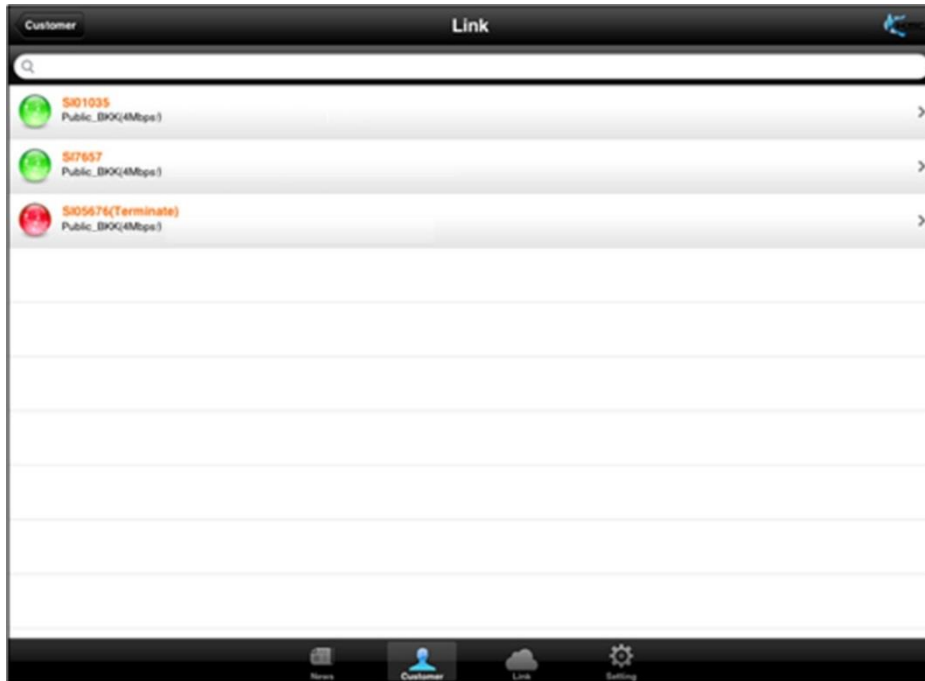
### 4.1 News

In News menu, you will see announcements and activities from KSC. It consists of submenus including PR news and Newsletter- as shown in the picture below.



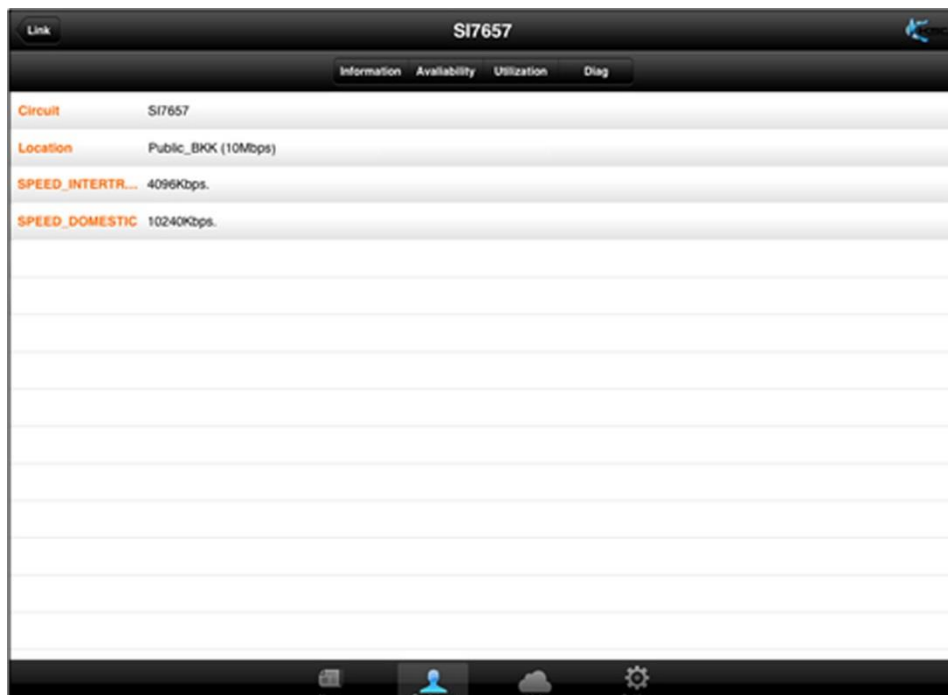
## 4.2 Customer

In Customer menu, you will see links performance status and details. You can view information of each link by clicking the link name. The submenus include Information, Availability, Utilization and Diag. However, Diag isn't available in this version.



### 4.2.1 Submenu: Information

It shows general information of the links including circuit, location and domestic & International speed.





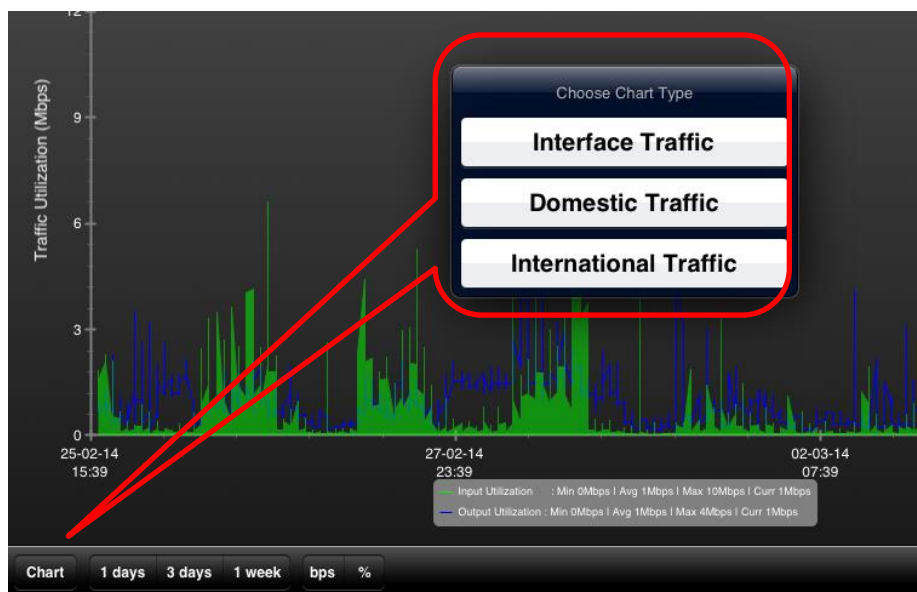
#### 4.2.2 Submenu: Availability

It shows a link down record of the links you are using. In the picture below, no trace of links down was found. If the link is down, the green area will not rise to 100%.

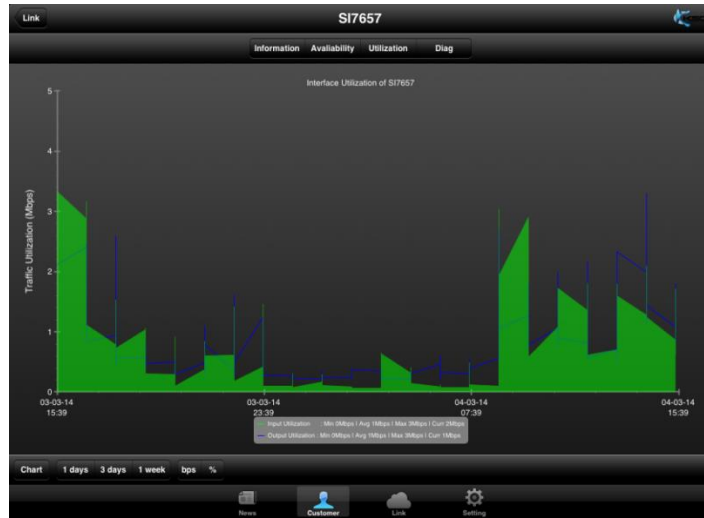


#### 4.2.3 Submenu: Utilization

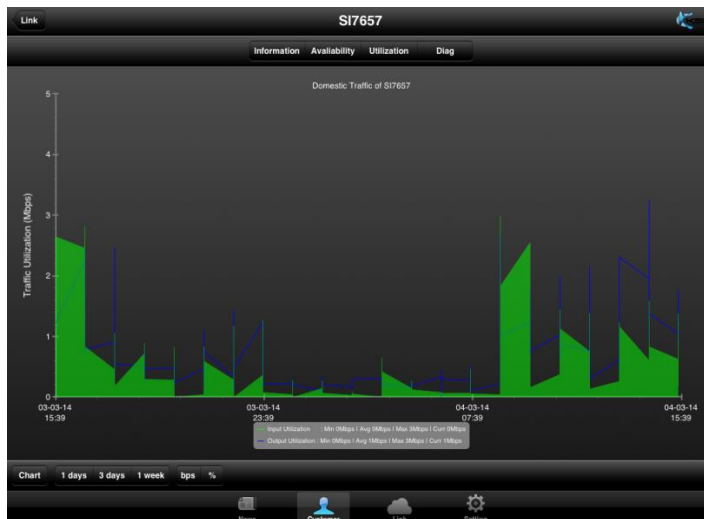
In this page, you can see both domestic and international utilization of your links at that moment by clicking **Chart**. **Interface Traffic** is the utilization of links both domestically and internationally.



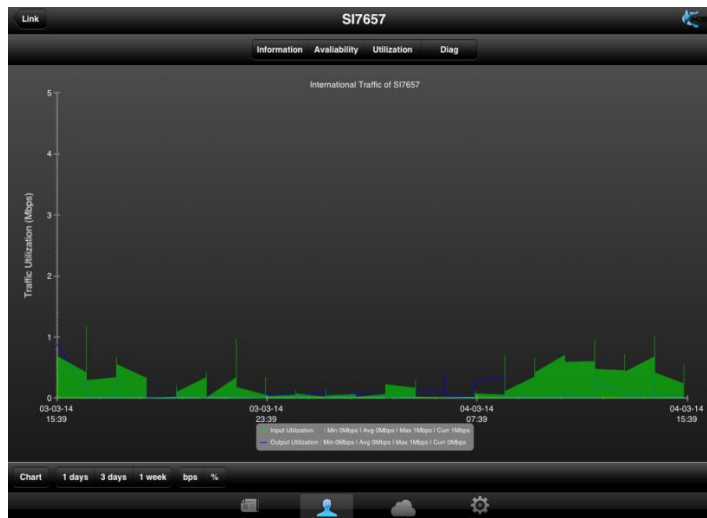
### Sample: Interface Traffic



### Sample: Domestic Traffic



### Sample: International Traffic

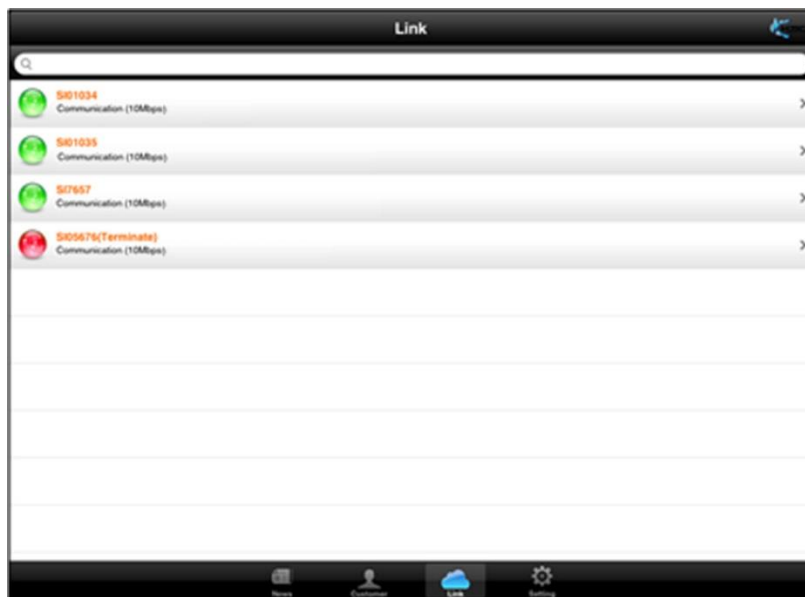


You can define the period shown in graph to 1 day, 3 days or 1 week and can also show the information either in percentage of utilization or bps.



### 4.3 Link

Show all links details. It's similar to "Customer" menu but the links are not grouped.



### 4.4 Setting

You can log out from this application by clicking "Log Out" button.

