



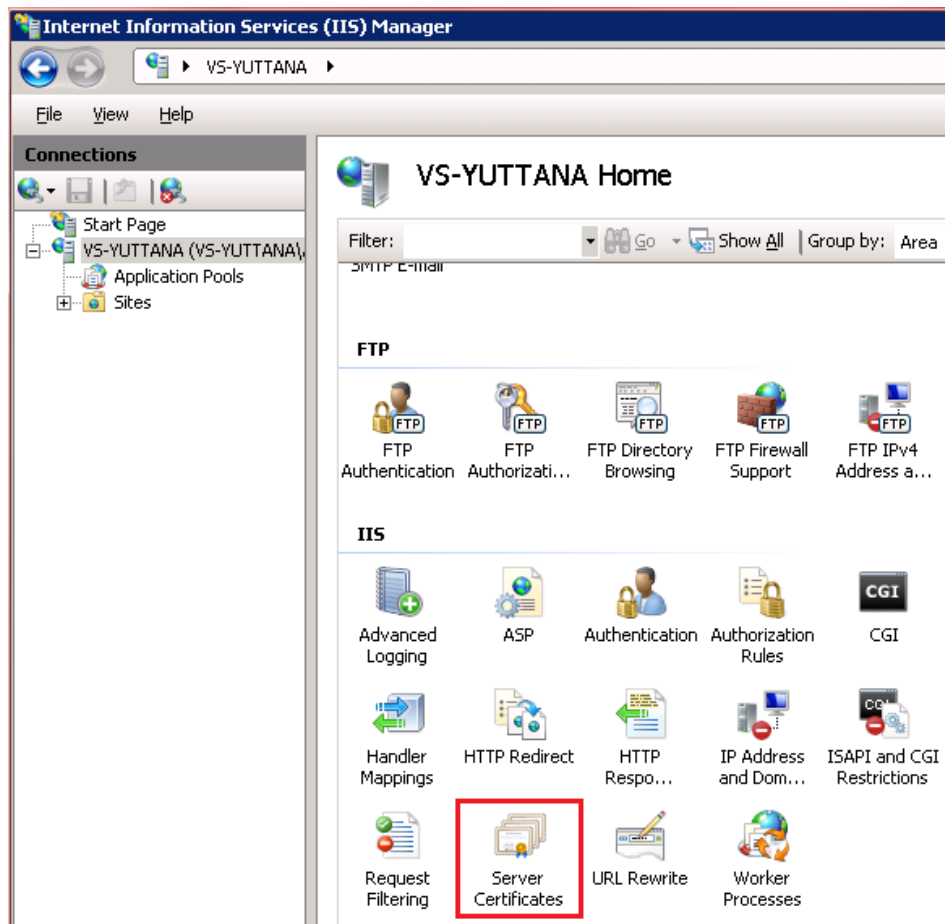
Server Certificate Preparation and Installation for Windows Server 2008

English Version: 1.0

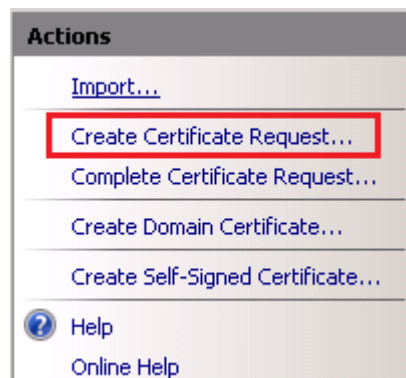
STEP FOR WINDOWS SERVER 2008

1. To Generate CSR (Certificate Signed Request)

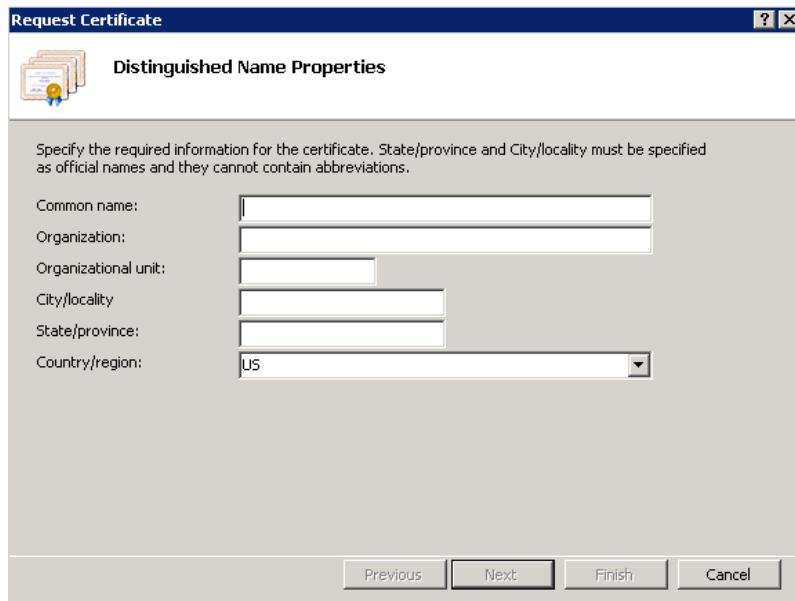
1.1 In Internet Information Service (IIS) – Home, you will find the **Server Certificates** icon.



1.2 Click **Server Certificates** to open. under **Actions** tool, select “**Create Certificate Request**”.



1.3 Enter the information about your site to register for a Certificate.



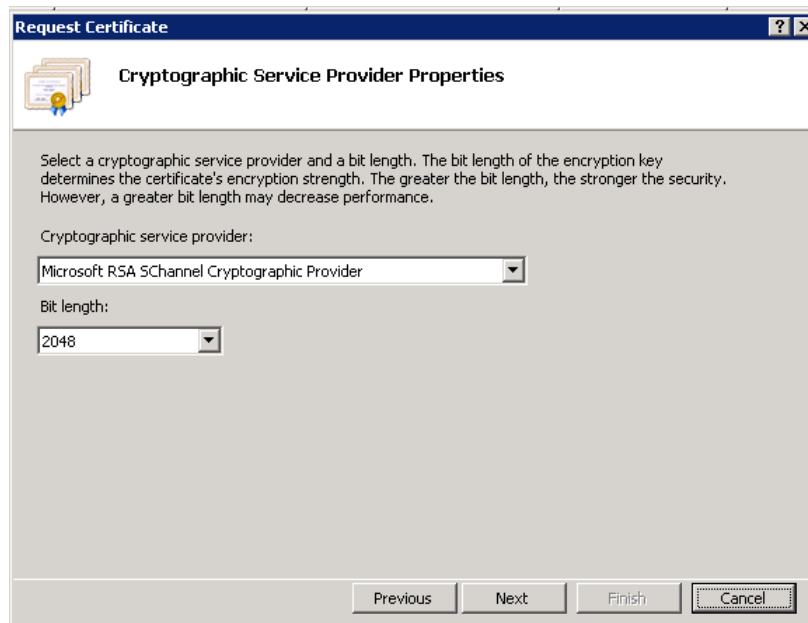
The dialog box is titled "Request Certificate" and "Distinguished Name Properties". It contains the following fields:

- Common name: [Text box]
- Organization: [Text box]
- Organizational unit: [Text box]
- City/locality: [Text box]
- State/province: [Text box]
- Country/region: [Dropdown menu with "US" selected]

Buttons at the bottom: Previous, Next, Finish, Cancel.

Remark: Common name is the name that will be certified by CA (Certificate Authority) as the site that is registered to the certificate installed on that server. Usually, it is a 1:1 installation, except for the Wildcard and SAN (Subject Alternative Name) certificates that are needed to be carefully installed.

1.4 Choose Microsoft RSA SChannel Cryptographic Provider as a **Cryptographic service provider** option and select 2048 for Bit Length. (2048 is the current standard Bit Length.)



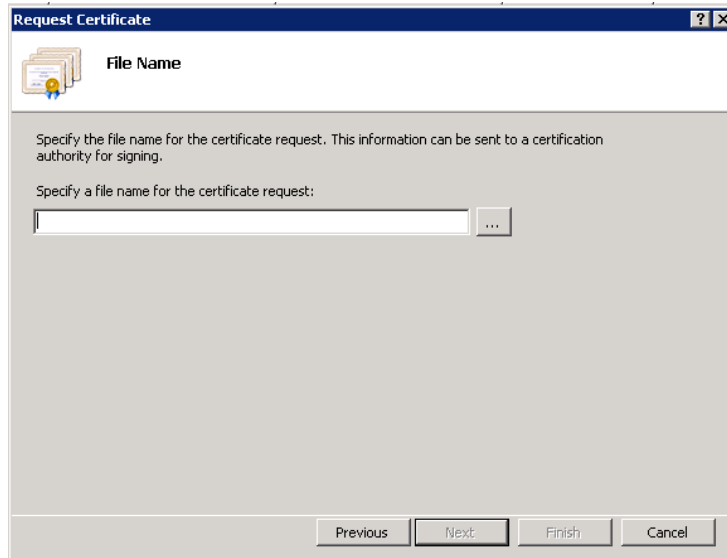
The dialog box is titled "Request Certificate" and "Cryptographic Service Provider Properties". It contains the following fields:

- Cryptographic service provider: [Dropdown menu with "Microsoft RSA SChannel Cryptographic Provider" selected]
- Bit length: [Dropdown menu with "2048" selected]

Buttons at the bottom: Previous, Next, Finish, Cancel.



- 1.5 Enter the location of where you would like to save the file to finish CSR preparation.



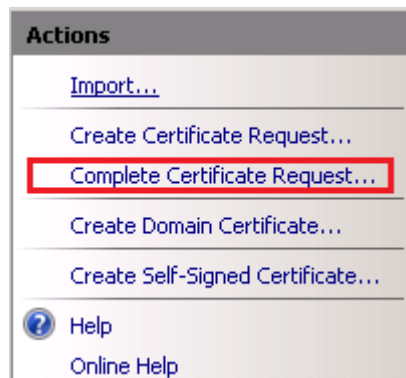
Example of CSR

```
-----BEGIN NEW CERTIFICATE REQUEST----- << starts with Begin CSR
MIIEczCCA1sCAQAwgZIxZCzAJBgNVBAYTAIRIMRAwDgYDVQQIEwdCYW5na29rMQ4w
DAYDVQQHEwVMYWtzaTEpMCCGA1UEChMgIEtTQyBDb21tZXJjaWFsIEludGVybmV0
IENvLixMdGQxHzAdBgNVBAsTFkluZm9ybWF0aW9uIFRIY2hub2xvZ3kxFTATBgNV
BAMTDGRlbW8ua3NjLm5ldDCCASlWdQYJKoZIhvcNAQEBBQADggEPADCCAQoCggEB
AJ6tTjpi6REXNbKh0RD2IcJfbPfrLONSU3psqVP2XK3/+DS3Rw46ljene4tQA0FO
LWuYlo08zkay/qN1JFGOSHY5H16LmAdcU0YUVVwVgVQj3kcXjEunb4qVR0Gu1FSm
OvT1XSjMslc5y81HrxsnwYSR145UyqV2stvEV3uaAQHzDykkl+S+TQg53pc1KY0
imUtuN7duUhlZ/b5jyIOMuIEUHQ3FIBIS9ghlzWZHM40RNhH6eE6d0HJANaWFO0
tFxbAbwhLR83gN854xvDHIHSaZp//0E5X3C9mNTMHkc/wYhZLVkdy1CPrbXpxxAb
e+hiuRPuOggI69t+sT6gmC8CAwEAAaCCAZkwGgYKKwYBBAGCNw0CAzEMFgo1Ljlu
Mzc5MC4yMHsGCisGAQQBgjcCAQ4xbTBrMA4GA1UdDwEB/wQEAwIE8DBEBgkqhkiG
9w0BCQ8ENzA1MA4GCCqGSIb3DQMCAGIAgDAOBggqhkiG9w0DBAICAIwBwYFKw4D
AgcwCgYIKoZIhvcNAwcwEwYDVR0IBAwcGgYIKwYBBQUHAWewgf0GCisGAQQBgjcN
AgIxge4wgesCAQEEwGBNAGkAYwByAG8AcwBvAGYAdAAgAFIAUwBBACAAUwBDAGGA
YQBUAG4AZQBsACAAQwByAHkAcAB0AG8AZwByAGEAcABoAGkAYwAgAFAAcgBvAHYA
aQBkAGUAcgOBiQAAAAAAAAAAAAAAAAAAAAAAAAAAAAAAAAAAAAAAAAAAAAAAAAAAAA
AAAAAAAAAAAAAAAAAAAAAAAAAAAAAAAAAAAAAAAAAAAAAAAAAAAAAAAAAAAAAAAAAAAA
AAAAAAAAAAAAAAAAAAAAAAAAAAAAAAAAAAAAAAAAAAAAAAAAAAAAAAAAAAAAAAAAAAAA
AAAAMA0GCSqGSIb3DQEBBQUAA4IBAQB+gA5C/sHtdqoV9mD3qmY4x6Nu+44e9z1/
PnYoBt9KTzI/FyY1CRIEb/Cs7zjTJ0bUDLCDQCTOXL0BuMg3BLnjtnRTjTEu18Tx
/p9DE5ho5mNBijjg6r6dFtPVwUxBAJ0588nBSWB6gDDVmj8G+x9eo5cn2UiEKgjM
EhgI8bWAwSyQZLsouPnLcJVbipdZb/t1NIUOxfNFfsgEpK1AiWixTY3i5A4korVN
n0/AeJuB8JG7sAgnr9cN53t26YsUjHKw1oYxUIM+oiGF6FHUiW98rTW4VEp40HrY
EQkMO5vObF9IqlBsCtcrSq8mTlpT6xxbcQR5mNvNybCPXgjSrMxS
-----END NEW CERTIFICATE REQUEST----- << ends with END CSR
```

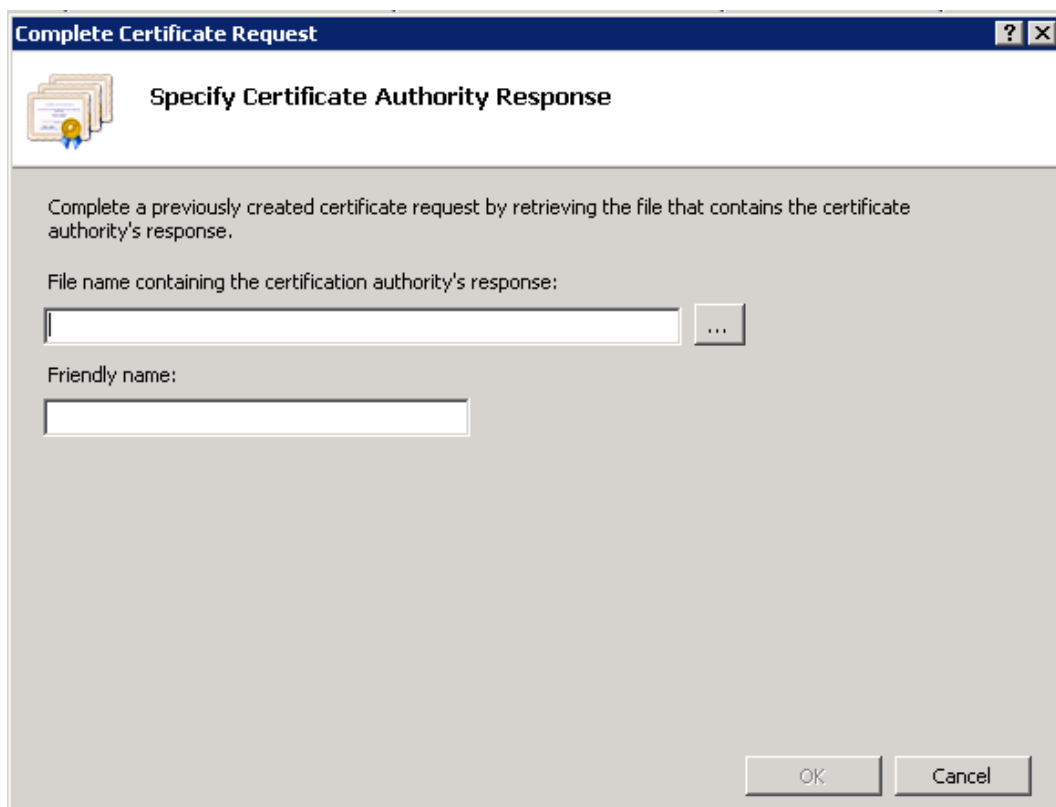
2. To install Certificate file.

CA (Certificate Authority) will generate the certificate in Base 64 encoded Text, which is similar to CSR but change from BEGIN NEW CERTIFICATE REQUEST to BEGIN CERTIFICATE. The installation process starts at Server Certificate.


- 2.1 Open Server Certificates, under **Actions** tool, select **“Complete Certificate Request”**.



- 2.2 Choose the Certificate file and enter friendly name for this Certificate (you may use a simple format: common name-issued year, for example; demo.ksc.net-2011.)



2.3 As the installation is completed, the installed Certificate will appear in the Server Certificates' List.)

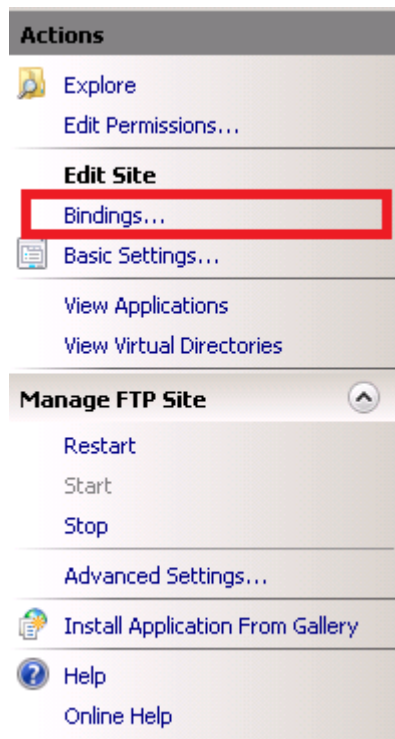
 **Server Certificates**

Use this feature to request and manage certificates that the Web server can use with Web sites configured for SSL.

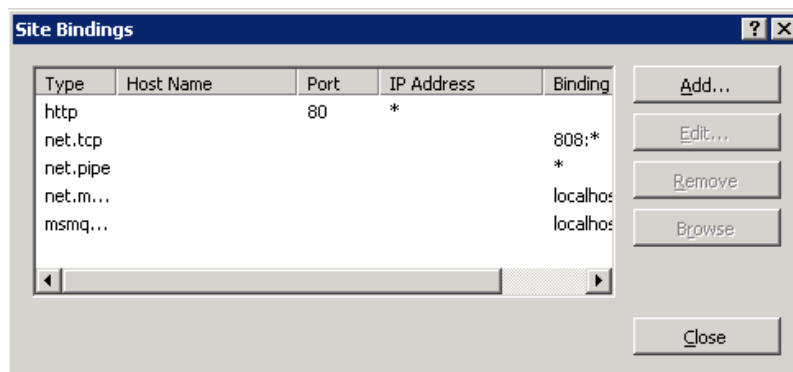
Name	Issued To	Issued By	Expiration Date	Certificate Hash
	WMSvc-V5-YUTTANA	WMSvc-V5-YUTTANA	2/1/2021 5:19:43 PM	048BD85FADE377894215BBFFB...
demo.ksc.net-2011	demo.ksc.net	it-AD01-CA	6/28/2011 3:06:05 PM	5A63940C13F0E06503512114B...

2.4 Select your SSL based site (an example is demo.ksc.net.)

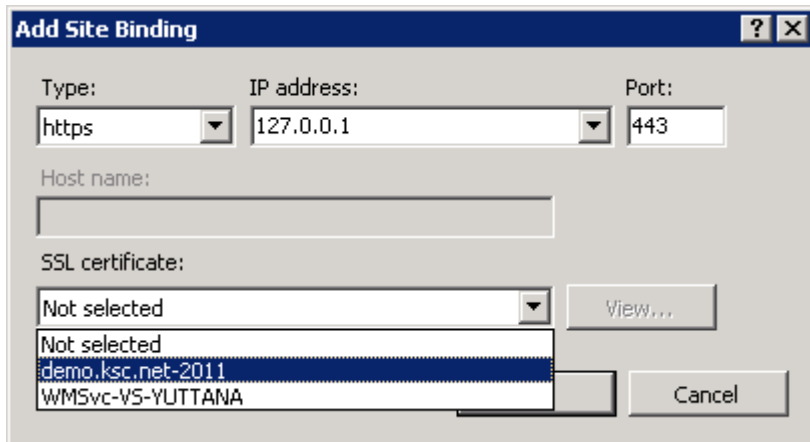
2.5 Under **Actions** tool, select **"Bindings"** to open **Site Bindings** window.



2.6 Click **Add** to add Site Bindings. Select **https** as a Binding Type.



2.7 SSL Certificates will appear, select the SSL Certificate that you have installed.



Remark: For some Certificate, you may need to install the Intermediate Certificate. You are recommended to read the information from CA carefully, or else, the Certificate might not work properly.