



iPass Wi-Fi Detector

User Guide

Corporate Headquarters
iPass Inc.
3800 Bridge Parkway
Redwood Shores, CA 94065 USA



www.ipass.com
+1 650-232-4100
+1 650-232-4111 fx

CONTENTS

Purpose	3
iPass Wi-Fi Detector	3
Pre-requisites	3
Installing iPass Wi-Fi Detector	4
Using the iPass Wi-Fi Detector	5
Connecting to Available iPass Wi-Fi Networks	5
Configuring the Notifications	5
Un-installing iPass Wi-Fi Detector	6

Copyright © 2009, iPass Inc. All rights reserved.

Trademarks

iPass and the iPass logo are trademarks of iPass Inc. All other brand or product names are trademarks or registered trademarks of their respective companies.

Warranty

No part of this document may be reproduced, disclosed, electronically distributed, or used without the prior consent of the copyright holder.

Use of the software and documentation is governed by the terms and conditions of the iPass Corporate Remote Access Agreement, or Channel Partner Reseller Agreement.

Information in this guide is subject to change without notice.

Every effort has been made to use fictional companies and locations in this manual. Any actual company names or locations are strictly coincidental and do not constitute endorsement.



Purpose

This User Guide helps you to install and use the iPass Wi-Fi Detector application.

iPass Wi-Fi Detector

iPass Wi-Fi Detector is a light-weight application which alerts the user of the available iPass Wi-Fi networks in the vicinity, without launching the iPassConnect client. The **application** will notify of available iPass Wi-Fi networks via a pop-up notification. You click on the notification to launch the iPassConnect client and connect to the Internet and your corporate networks securely. Once the notification disappears from the screen, a pop-up notification will not appear again until a change in the available networks is found.

Refer to the **iPassConnect User Guide** to know about working with iPassConnect client.

Pre-requisites

The following section provides the list of pre-requisites for installing the **application**.

Hardware Requirements

- Pentium III processor
- 512 MB RAM for Windows XP, and 1 GB RAM for Windows Vista
- 2.5 MB free disk space
- 16-bit color mode display

Device Requirements

- Wi-Fi - an NDIS v5.1-compliant 802.11b/g device with software drivers installed

Supported Operating System

- Windows XP Professional SP2

On Windows XP Professional SP2 machine ensure that the [Microsoft Wireless LAN API hot fix KB918997](#) is installed.

- Windows XP Professional SP3
- Windows Vista Business, Enterprise and Ultimate SP1 and SP2

iPass recommends installation of all updates for your Operating System.

Supported Languages

- iPass Wi-Fi Detector is only supported in English

Supported iPassConnect Versions

- On Windows XP: iPassConnect version 3.51 and later clients
- On Windows Vista: iPassConnect version 3.60 and later clients



Windows Service Requirements

- On Windows XP: **Wireless Zero Configuration** service should be running
- On Windows Vista: **WLAN AutoConfig** service should be running

Others

- Administrative privileges to install the **application**
- Supported iPassConnect client should be installed
- iPassConnect client is not configured to run at startup
- iPass Wi-Fi Detector installer

You will receive this from your IT Administrator

Installing iPass Wi-Fi Detector

You need to follow the instructions given below to install the **application** on the system. The procedure to install the **application** on Windows Vista and Windows XP is identical.

*In Windows Vista the **User Account Control** pops up to confirm the installation when UAC is enabled.*

The **application** can be installed successfully by following the steps given below:

1. Copy the installer file to a temporary folder in your system
For example: C:\Temp.
2. Double-click the installer file to start installation
For example: C:\Temp\iPass Wi-Fi Detector.msi.

The **iPass Wi-Fi Detector – Install Shield Wizard** Window comes up, as in the **Figure 1**.



Figure 1

3. Click **Next**

The **Ready to Install the Program** Window is displayed.

4. Click **Install**

The **Installing iPass Wi-Fi Detector** Window is displayed with the Progress bar.

*If your system does not meet the Pre-requisites, then following error message as in **Figure 2** will appear.*

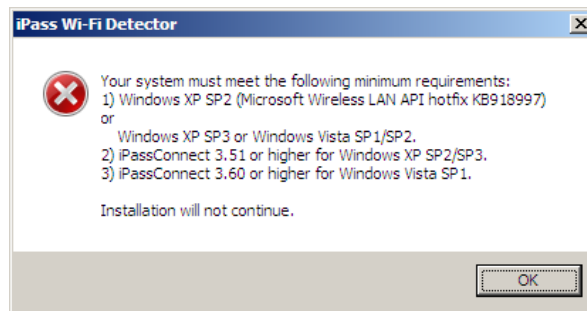



Figure 2

5. Click **Finish**

*You will see the **application** icon () in the system tray*

Using the iPass Wi-Fi Detector

The **application** can be used and configured as given below.

Connecting to Available iPass Wi-Fi Networks

Clicking on the notification that pops up, or double clicking on the **application** icon in the system tray, will launch the iPassConnect client. You can connect to the Internet or your corporate network using iPassConnect. The notification will appear only when the **application** detects an available iPass Wi-Fi network as in **Figure 3**.

Wi-Fi should be enabled for the application to detect and display network notifications.

The application may incorrectly identify a non iPass hotspot, when the SSID is the same as an iPass enabled hotspot.

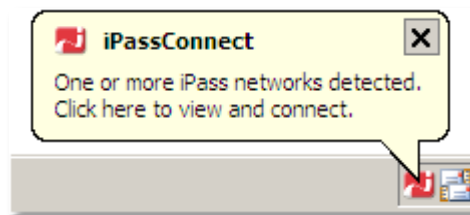


Figure 3

Configuring the Notifications

Right-click on the **application** icon in the system tray, as in **Figure 4**, to configure the pop-up notification:

- Select **Notify** to enable the pop-up. This is the default setting.
- Select **Don't Notify** to disable the pop-up.

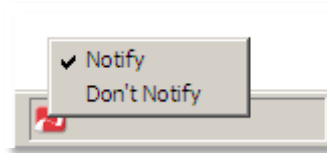



Figure 4

This notification setting is not cached and hence will be reset to the default value on system reboot

Un-installing iPass Wi-Fi Detector

The procedure for un-installing the *application* is given below.

1. Click **Start > Settings > Control Panel**
The Control Panel is displayed.
2. Click **Add or Remove Programs**
The list of installed applications is displayed.
3. Select **iPass Wi-Fi Detector** and click **Remove**
The '**Are you sure you want to remove iPass Wi-Fi Detector from your computer?**' message is displayed.
4. Click **Yes**
The *application* and the icon () are removed.