

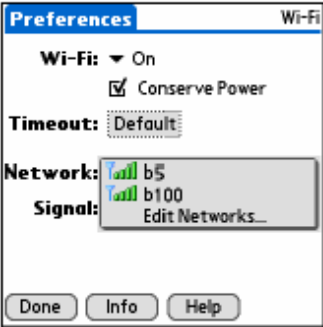




Palm One

Life Drive Wireless manual

Setting up a Wi-Fi network connection

1	Tap Wi-Fi controls  on the status bar.
2	Select the Wi-Fi pick list, and then select On. Go to step 3. If Wi-Fi is already on, select Scan. Go to step 4. 
3	Select the Network pick list, and then do one of the following: <ul style="list-style-type: none">• If the network is listed and does not require an encryption key, select the network. Wait for the connection to finish, and then select Done. You are now connected and this procedure is done.• If the network is not listed or if the network requires an encryption key, select Edit Networks and go to step 4. 
4	Add or edit a network: <ul style="list-style-type: none">• If the network appears on the list, select the network and then select Edit to add encryption key information. Go to step 6.• If the network does not appear on the list, select Add. The network may be hidden for security purposes. 
5	Add the network name or SSID if it does not appear. An SSID is required for hidden networks. ➤ Continued 

6

Select the Security pick list, and then select a security option:

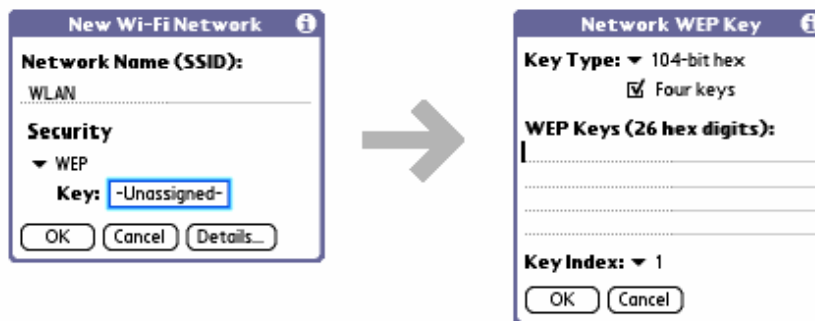
- If your network does not require any encryption settings, select None and go to step 9.
- If your network requires WEP encryption, select WEP and go to step 7.
- If your network requires WPA-PSK encryption, select WPA-PSK and go to step 8.



7

If you selected WEP in step 6, enter the WEP encryption information:

- a. Select the Key box.
- b. Select the Key Type pick list and select a key type:
 - 40-bit hex** Creates a 10-digit hexadecimal number.
 - 40-bit ASCII** Creates a five-character string.
 - 40-bit passphrase** Creates a variable-length string.
 - 104-bit hex** Creates a 26-digit hexadecimal number.
 - 104-bit ASCII** Creates a 13-character string.
 - 104-bit passphrase** Creates a variable-length string.



Cont'd

- c. If you want to enter more than one WEP key, or you want to generate four WEP keys from a passphrase, check the Four keys box.
- d. Enter the WEP key(s).
- e. If you checked the Four keys box, select an index number from the Key Index pick list.
- f. Select OK and go to step 9.

8

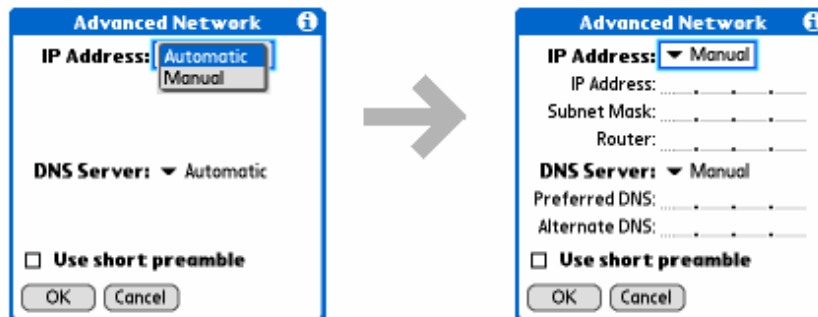
If you selected WPA-PSK in step 6:

- a. Select the Key box.
- b. Assign a passphrase.
- c. Select OK.

**9**

[&] OPTIONAL Manually set your IP or DNS addresses:

- a. Select Details.
- b. Select the Connect to pick list, and then select Access Point (infrastructure).
- c. Select Advanced.
- d. Select the IP Address or DNS Server pick list, and then select Manual.
- e. Enter the IP address or DNS server information.
- f. If you want to use a preamble, check the Use short preamble box.
- g. Select OK.

**10**

Select OK and then select Done.

**Done**

You can now connect to the network any time you are within range of the access point.