

Hp 6365 Model



With wireless access, you do not need to use cables to connect your Pocket PC to the Internet. However, you must have a Wireless Access Point to be able to transmit data to and from your wireless device. Your Pocket PC can connect to an 802.11b Wi-Fi network or connect directly to other Wi-Fi enabled devices.



iPAQ Wireless icon—Tap to display the iPAQ Wireless screen. The iPAQ Wireless screen provides a control center to turn all wireless activities on and off, and to configure their settings.



Active Wi-Fi connection to computer or wireless network.



Active connection to computer or wireless network.



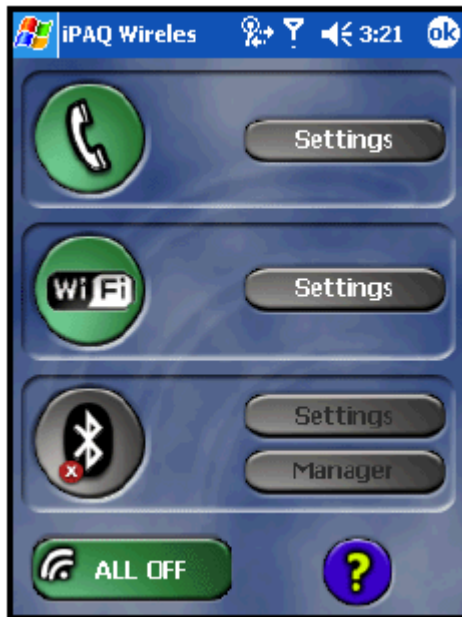
Inactive connection to computer or wireless network.


Tap to switch to a program.

Tap to set Wireless connections.

Tap to launch the iPAQ Wireless screen.

The screenshot shows the Start screen of the iPAQ device. At the top, there is a 'Start' button with a Windows logo, a signal strength indicator, a Wi-Fi icon, and a battery level indicator. Below this, the date 'Monday, April 12, 2004' is displayed. Further down, there are several notification items: 'Owner: John Howard (231) 514-2000', 'Tomorrow: Breakfast meeting 8:00AM-9:00AM (Conference room 22...)', 'No unread messages', and '1 Active task'. At the bottom of the screen, there is a 'New' button and a small green Wi-Fi icon in the bottom right corner. Annotations with lines point to the 'Start' button, the Wi-Fi icon in the top right, and the Wi-Fi icon in the bottom right.





- To power on one or more wireless activities, tap the desired buttons.
- To power off one or more wireless activities, tap the desired buttons or tap the **All Off** button () to power off all activities.

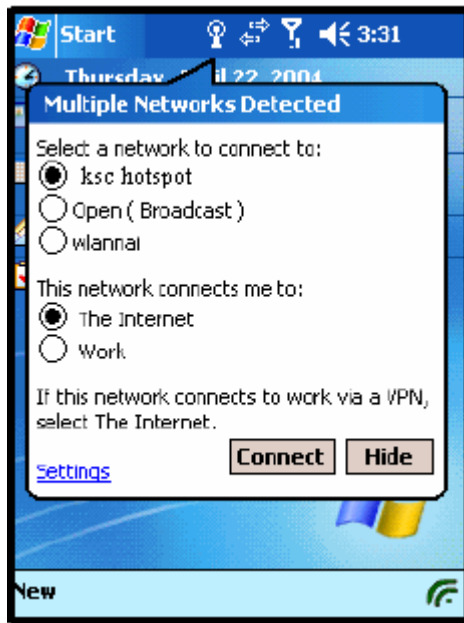
Connecting to Hotspots

Connecting to a hotspot in your local coffee shop or at the airport or other public places usually requires a contract with the hotspot service provider. You can purchase a contract at the hotspot site from your service provider or by accessing the service provider's Web site.

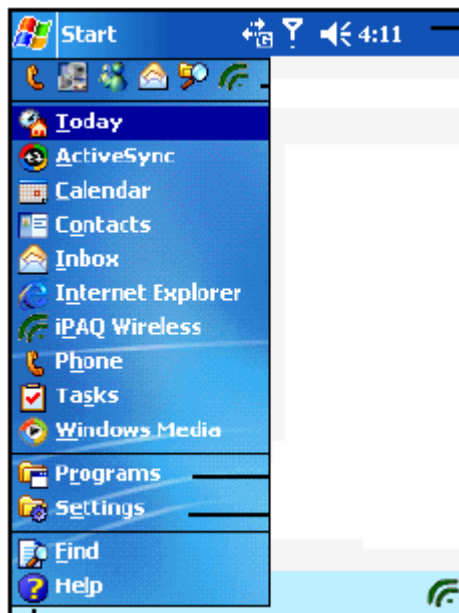
Once you have purchased this service, you will be able to connect to their hotspots using your HP iPAQ Pocket PC.

To connect at the hotspot location:

1. From the **Today** screen, tap the **iPAQ Wireless** icon () in the Command bar, then tap the **Wi-Fi** icon on the iPAQ Wireless screen.
2. Tap **OK**.
3. Tap the Wi-Fi icon () in the Navigation bar to view the Connectivity drop-down box.
4. Select the network when it is detected and tap **Connect**.



5. Launch Internet Explorer—From the **Start** menu, tap **Internet Explorer**.
6. Enter the Internet address to be accessed in the address bar and tap **GO**.



Wi-Fi Signal Strength

To view the signal strength between your Pocket PC and Wi-Fi access point connections:

1. Tap the **Data Connectivity** icon in the Navigation bar.
2. When the drop-down Connectivity box displays, you are able to view the name of the network the Pocket PC is connected to (SSID) and an icon displaying the signal strength.

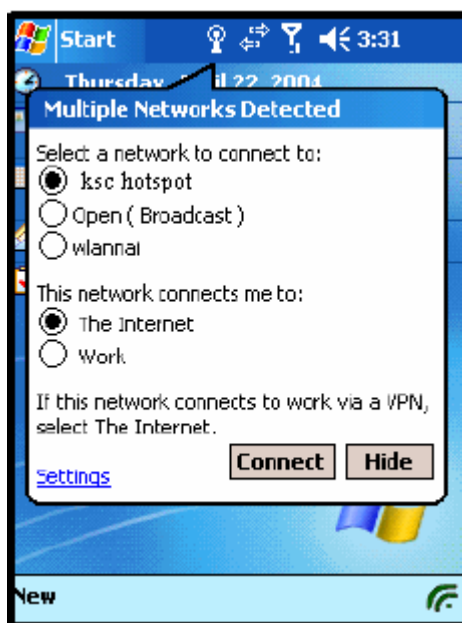


Tap a Data Connectivity icon to display the drop-down Connectivity box.

Wi-Fi Settings Button

First, tap the **Wi-Fi Power** button to power it on; then press the **Settings** button to open the Wi-Fi configuration screen.

Automatically Connecting to a Network



1. If one or more networks are present, the **Wi-Fi** icon (📶) appears in the Navigation bar. Tap the network you want to connect to, then tap whether the network connects to the Internet (does not use proxy settings) or **Work** (uses proxy settings).
2. If you are prompted for a Network Key (WEP), enter it and tap **Connect**. If you are not sure, contact your network administrator.

Manually Entering New Network Settings

1. From the Today screen, tap the **iPAQ Wireless** icon (📶).
2. On the iPAQ Wireless screen, tap the **Wi-Fi** button to turn it on, then tap the **Settings** button next to it.
3. Tap the **Wireless** tab > **Add New Settings**.
4. Tap the **General** tab and enter a network name (SSID).
5. In the **Connects to:** box, select where your network connects to (**The Internet** or **Work**).
6. If you want to connect to an ad-hoc connection, tap the **This is a device-to-computer (ad-hoc) connection** checkbox.
7. If authentication information is needed, from the Settings screen, tap **Configure Wireless Networks**.

Searching for Networks to Access

1. Turn on the Wi-Fi by tapping the **iPAQ Wireless** icon > **Wi-Fi** button > **OK**.
2. From the **Start** menu, tap **Settings** > **Connections** tab > **Connections** icon > **Advanced** tab > **Network Card** button > **Wireless** tab.
3. In the **Networks to access** box, tap the type of network you want to connect to (**All Available**, **Only access points**, or **Only computer-to-computer**).
4. To connect only to networks that have already been configured, clear the **Automatically connect to non-preferred networks** checkbox.

