

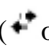
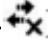
Hp4150 Using the Wireless LAN Manual

Powering the WLAN On or Off


To use WLAN on your iPAQ Pocket PC, you need to turn on WLAN and set up your device. To turn the WLAN on or off:

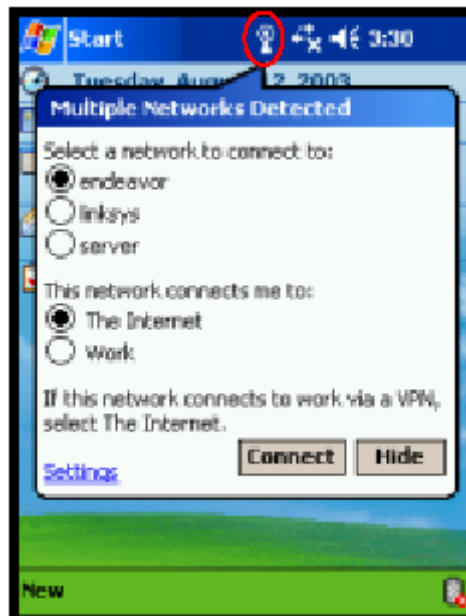
1. From the **Today** screen, tap **Start > iPAQ Wireless**.
2. Tap the **WLAN** icon.

If the WLAN is powered on, the **WLAN** icon on the iPAQ Wireless screen will turn from orange to green and the Wireless LAN indicator, located to the left of the power button, will blink green to indicate WLAN is on or alternate between blinking green and blinking blue if Bluetooth is also turned on.

Shortcut: If you have enabled Wireless LAN using **Start > iPAQ Wireless**, from the **Today** screen, tap the **Connections** icon ( or ), then tap **Turn Wireless On** or **Turn Wireless Off**. If the WLAN is powered off, the **WLAN** icon will turn from green to orange.

Automatically Connecting to a Network


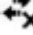
1. If one or more networks are present, the **Network Indicator** icon () will appear in the Navigation bar. Tap the network you want to connect to, then tap whether the network connects to the Internet (does not use proxy settings) or Work (uses proxy settings).



2. If you are prompted for a Network Key (WEP), enter it and tap **Connect**. If you are not sure, contact your network administrator.

Manually Entering New Network Settings

A wireless network can be added either when the network is detected (the **Network Indicator** icon is showing in the Navigation bar) or manually by entering setting information. To manually add a wireless network:

1. Be sure the WLAN is powered on.
2. Tap the **Connections** icon ( or ) > **Settings** > **Advanced** tab > **Network Card** button > **Wireless** tab > **Add New Settings**.
3. Tap the **General** tab and enter a network name (SSID).
4. In the **Connects to:** box, select where your network connects to (**The Internet** or **Work**).
5. If you want to connect to an ad-hoc connection, tap the **This is a device-to-computer (ad-hoc) connection** checkbox.
6. If authentication information is needed, from the **Configure Wireless Network** screen,

Searching for Networks to Access

Networks that you have already configured are preferred networks and are listed in **Wireless Networks**. You can choose whether to connect only to preferred networks or to have your iPAQ Pocket PC search for and connect to any available network (preferred or not).

1. Tap the **Connections** icon > **Settings** > **Advanced** tab > **Network Card** button > **Wireless** tab.
2. In the **Networks to access** box, tap the type of network you want to connect to (**All Available**, **Only access points**, or **Only computer-to-computer**).
3. To connect only to networks that have already been configured, clear the **Automatically connect to non-preferred networks** checkbox.

Managing Wireless Network Settings


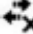
Viewing or Editing a Wireless Network

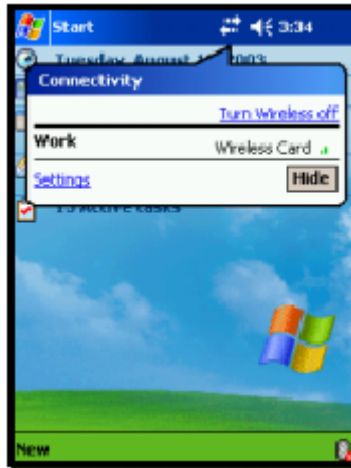
To view or edit an existing or available wireless network:

1. Be sure the WLAN is powered on.
2. Tap the **Connections** icon > **Settings** > **Advanced** tab > **Network Card** button > **Wireless** tab.
3. In the **Wireless networks** box, tap the desired network name.
4. Edit the existing settings as necessary, then tap **OK** to save the changes.

Monitoring Signal Strength and Status

To view the signal strength between your iPAQ Pocket PC and access point WLAN connection:

1. Tap the **Connections** icon ( or ) in the Navigation bar.
2. When the **Connectivity** box displays, you will be able to view the type of network the iPAQ Pocket PC is connected to (for example, **Work** or **Internet**) and an icon displaying the signal strength.



3. To make changes to the connection settings, tap **Settings**.
4. To exit the **Connectivity** box, tap the **Hide** button.

@@@@ End @@@@